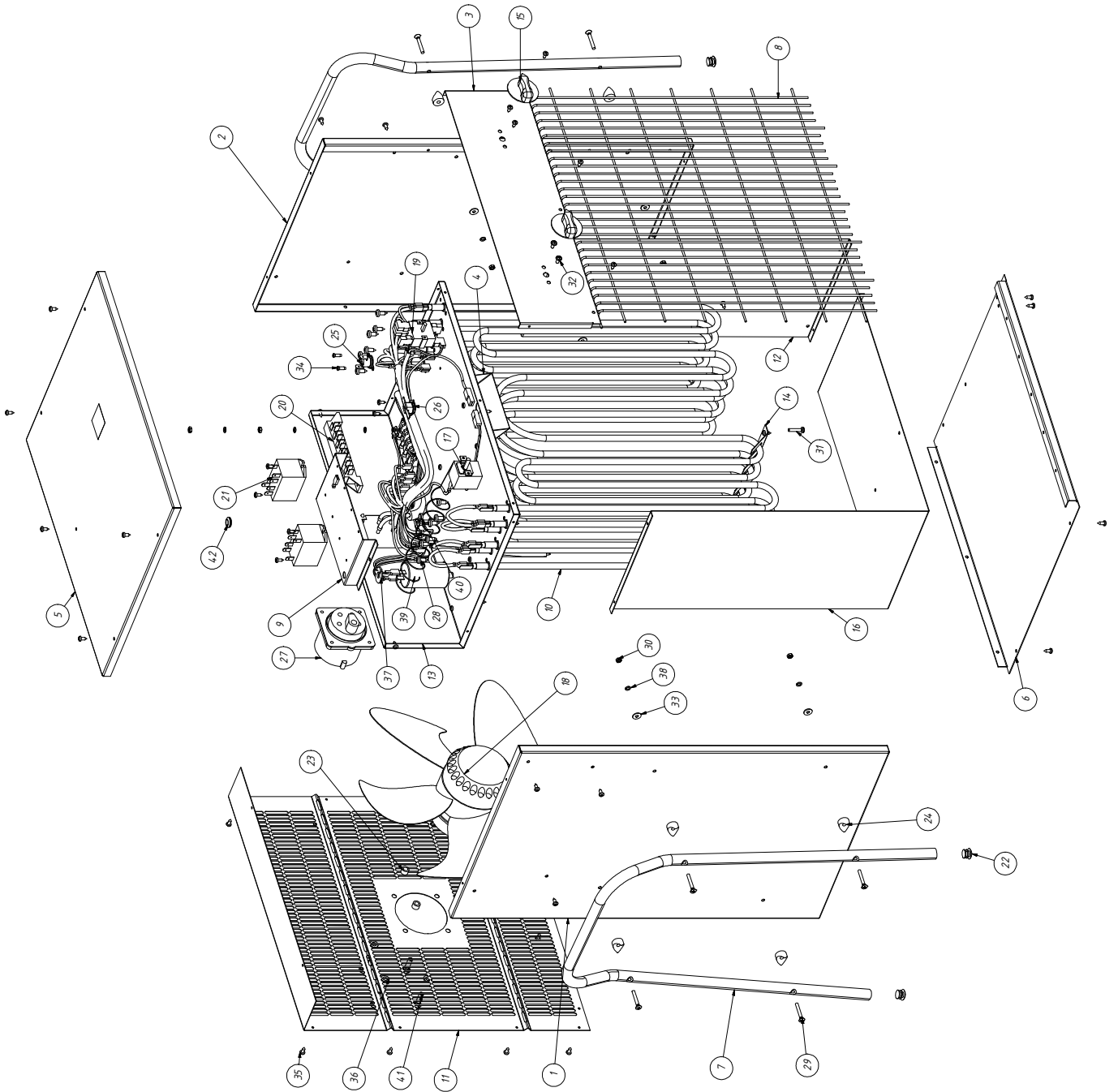


ELECTRIC HEATERS

MODEL REM 22 EPB

ILLUSTRATED PARTS BREAKDOWN



ELECTRIC HEATERS REM 22 EPB 22kW

Pos.	Description	Code	Qty.
1	RIGHT PANEL	S/R	1
2	LEFT PANEL	S/R	1
3	NAME PLATE PANEL	S/R	1
4	BOUNDARY LAYER	S/R	1
5	TOP PANEL	S/R	1
6	DOWN PANEL	S/R	1
8	GRILLE 22 EPB	4511.273	1
9	CONTACTOR FASTENING	S/R	1
10	HEATING ELEMENT 3666W	4510.375	6
11	BACK PANEL	S/R	1
12	HEAT SHIELD	S/R	1
13	SHELF	S/R	1
14	STABLE ELEMENT	4511.251	1
15	KNOB 44mm	4510.610	2
16	HEAT SHIELD TYPE "L"	S/R	1
17	CAPILLARY THERMOSTAT 16A/250V 0-40oC	4510.416	1
18	AXIAL FAN MOTOR 70W/230V	4510.322	2
19	ROTARY SWITCH 16A/400V	4510.401	1
20	SCREW TEWRMINAL BLOCK 6x40A/450V	4510.414	1
21	RELAY 25A/250V RELPOL	4510.451	2
23	DISTANCE 6,2X10X7	4510.627	4
25	OVERHEAT THERMOSTAT 16A/250V 80oC	4510.449	1
26	OVERHEAT SENSOR 16A/250V 60oC/NO	4510.404	1
27	PLUG PANEL MOUNTED 32A/400V 3P+N+E (56)	4510.411	1
28	TAPPING SCREW ST4.8X13	4510.821	16
30	HEXAGON NUT M4	4510.808	11
31	SCREW M4X20	4510.804	1
32	SCREW M4X8	4510.814	2
33	PLAIN WASHER M4	4510.849	8
34	SHEET-METAL SCREW ST3,9X9,5	4510.841	2
35	CROSS RECESSED PAN HEAD TAPPING SCREW ST3,5X9,5	4510.847	56
36	SPRING LOCK WASHERS A6	4510.831	4
37	SPRING WASHER M8	4513.809	1
38	SPRING LOCK WASHERS A4	4510.810	11
39	HEXAGON NUT M8	4513.806	1
40	BELT 6/3 110	4510.608	10
41	METRIC BOLT M6x20	4514.805	4
42	SEAL WIRE 14.2x8x11x1,6x4.8mm	4511.621	1

S/R = Parts Available On Special Request Only